

BEARING COMPARISON
 N83°19'25"E ALONG THIS SURVEY =
 N83°21'15"E FAP NO. F.U.-85(16)

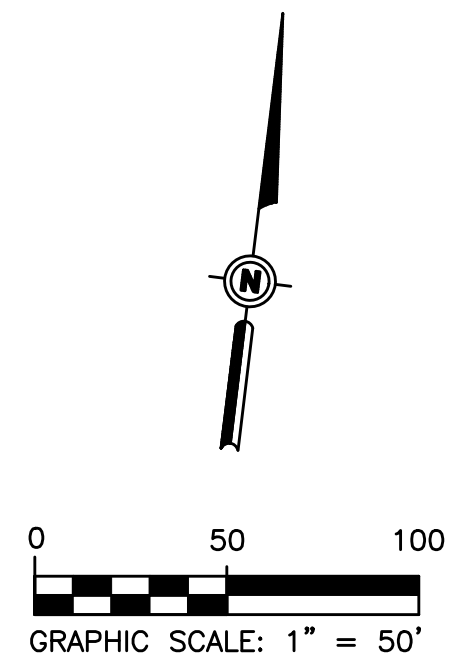
SECTION 11
 T-19-N, R-11-E

US 64 STA. 198+21.73
 97TH W. AVE. STA. 10+00.00

SECTION 12
 T-19-N, R-11-E

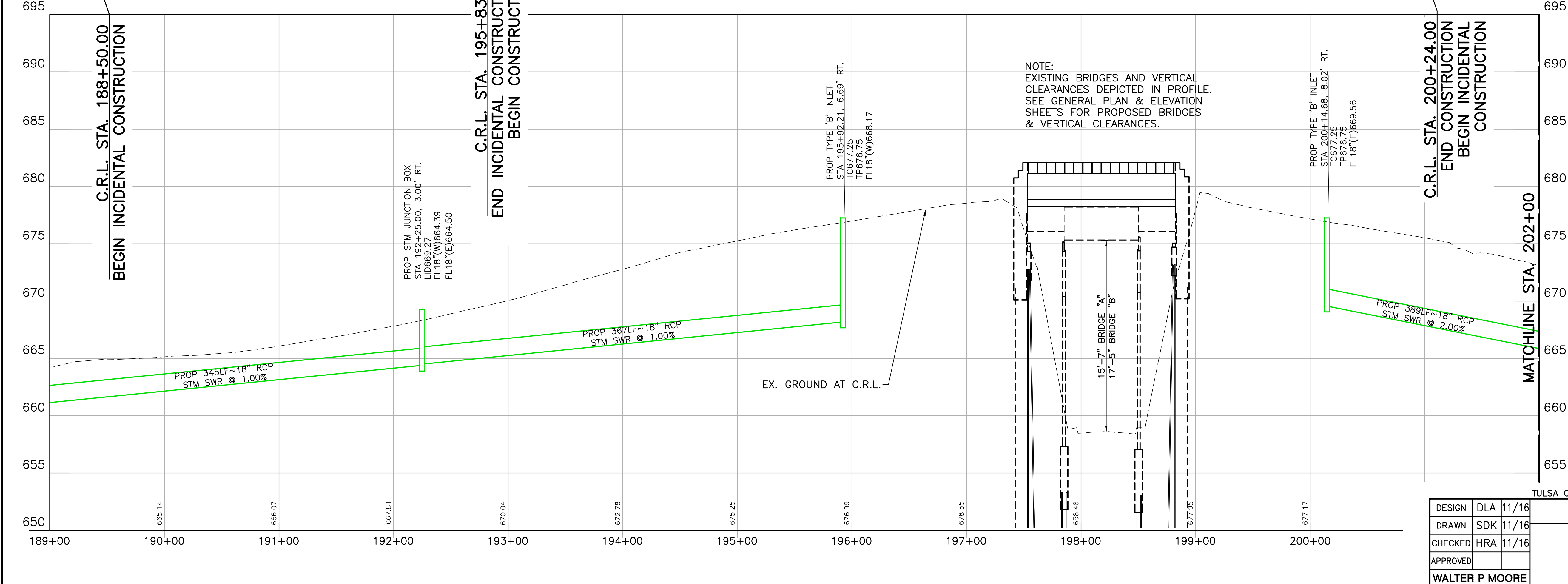
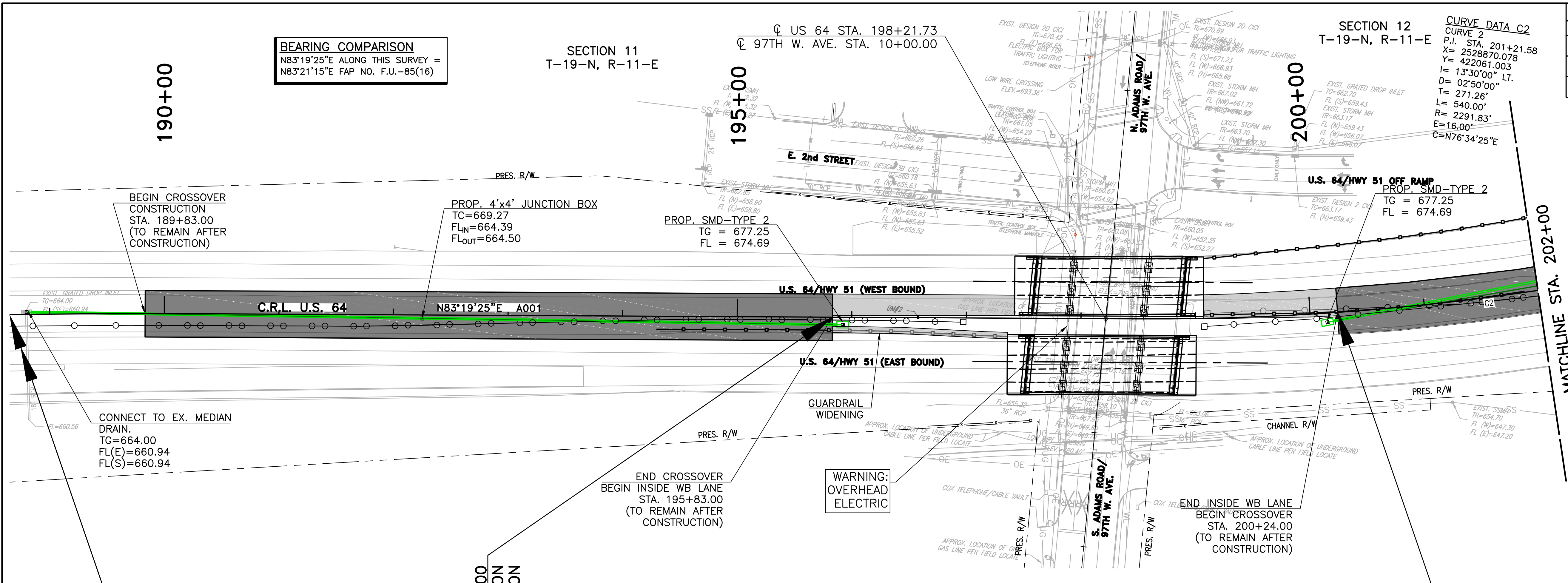
CURVE DATA C2
 CURVE 2
 P.I. STA. 201+21.58
 X= 2528870.078
 Y= 422061.003
 I= 13°30'00" LT.
 D= 02°50'00"
 T= 271.28'
 L= 540.00'
 R= 2291.83'
 E= 16.00'
 C=N76°34'25"E

REVISIONS		
REV. NO.	DESCRIPTION	DATE



LEGEND

- CROSSOVER AREA
- SHOULDER ADDITION AREA



DESIGN	DLA	11/16
DRAWN	SDK	11/16
CHECKED	HRA	11/16
APPROVED		
WALTER P MOORE		

TULSA COUNTY
 OKLAHOMA DEPARTMENT OF TRANSPORTATION
PLAN & PROFILE US 64
 (SHEET 1 OF 2)
 STATE JOB NO. 28884(04) SHEET NO. 9

V:\M12\2012\2005-07_0001_EC-1414_US-64_Book_3\Cadd\Plan\19-10-12-15003-07_Plan.dwg Jan. 12, 2017 - 9:16am mepack